



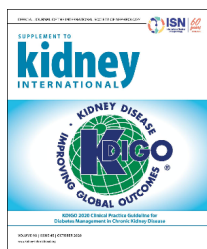
# KDIGO Direct

---

DECEMBER 2020

[View Full Version in Web Browser](#)

## KDIGO GUIDELINES



### **KDIGO Sees Updating Guidelines as High Priority**

This week, KDIGO announced an expansion of its guideline development program to include more frequent and rapid updates of KDIGO guidelines based on emerging evidence. KDIGO is actively reviewing guidelines to determine which need updating. When an update is needed, KDIGO will move quickly to appoint a work group and an independent evidence review team to begin the process.

“KDIGO is more committed than ever to keeping guidelines up-to-date,” said Wolfgang Winkelmayr, MD, a Co-Chair of KDIGO. “Emerging new science must be made readily available. That is becoming a more important part of KDIGO’s agenda as we develop guidelines on new topics in addition to renewing the existing library of KDIGO guidelines. We’re excited to be a pioneer in this process and to act as a leader of guideline development in global nephrology.” [Read the full News Release.](#)



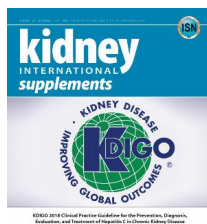
### **KDIGO Picks Autosomal Dominant Polycystic Kidney Disease for Next Guideline**

KDIGO has announced its next new guideline will be on Autosomal Dominant Polycystic Kidney Disease (ADPKD).

The prevalence of ADPKD worldwide approaches 13 million people. This genetic disease has varied manifestations for patients, progressing over many years, and frequently resulting in kidney failure. New treatments have emerged in recent years following decades of research. These new treatments will be addressed in the KDIGO Guideline.

“Since our Controversies Conference in 2017, we have been monitoring the ADPKD research landscape and feel this is the right time to begin a guideline on this important topic,” said Michel Jadoul, MD, of Belgium, and Co-Chair of KDIGO.

The guideline will be developed through a rigorous scientific process with a thorough review of the relevant literature and a structured assessment of the evidence. Recruitment is underway for the guideline work group, which will be comprised of experts balanced in gender, geography, and knowledge of the subject. [Read the full News Release.](#)



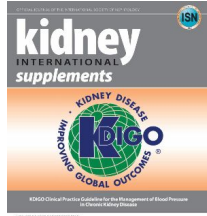
### **Hepatitis C in CKD Guideline to Receive Focused Update**

KDIGO has started the process for a formal and focused update of the 2018 Clinical Practice Guideline for the Prevention, Diagnosis, Evaluation, and Treatment of Hepatitis C in Chronic Kidney Disease.

Since the publication of the KDIGO Hepatitis C in CKD Guideline in 2018, additional evidence has accumulated on a number of issues. Specifically, the efficacy and safety of HCV+ to HCV- kidney transplantation. Additional studies have also been published on the role of sofosbuvir-based and other DAA treatment regimens in

CKD G1-G5, CKD G5D, and kidney transplant recipients. KDIGO believes these studies make it an opportune time to initiate a focused review on a few selected topics for which there are likely change implications to existing guideline statements. Depending on the outcome of this circumscribed systematic review, new guideline recommendations may be created or existing ones amended. Where appropriate, guideline statements that are no longer applicable will be removed.

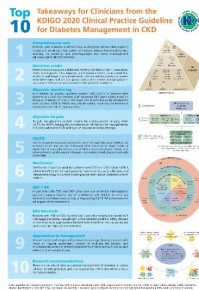
For the evidence review of the focused update of the Hepatitis C in CKD Guideline, KDIGO has enlisted the same team from Brown University that developed the 2018 guideline. For more information, visit the [Hepatitis C in CKD Guideline page on the KDIGO website](#).



### **KDIGO Blood Pressure Management in CKD Guideline and Glomerular Diseases Guideline Near Publication**

The 2020 Clinical Practice Guideline on the Management of Blood Pressure in Chronic Kidney Disease is on track for publication online in February 2021 and in print in March 2021. For more information, visit the [Blood Pressure Management in CKD Guideline website](#).

The KDIGO Clinical Practice Guideline on Glomerular Diseases is in the final stages of editing and on track to publish in early 2021. For more information, visit the [Glomerular Diseases Guideline page on the KDIGO website](#).



### **Implementation Efforts Expand for Diabetes in CKD Guideline**

KDIGO has expanded its implementation efforts for the 2020 Clinical Practice Guideline on Diabetes Management in Chronic Kidney Disease, with a number of new webinars, tools, and resources.

The updated Diabetes Guideline Speaker's Guide, Top Ten Takeaways for Clinicians and Patients, and additional resources are available on the [Diabetes in CKD Guideline page on the KDIGO website](#).

Recordings for a number of recent KDIGO webinars and conferences on the Diabetes Guideline are now available on [the KDIGO YouTube channel](#). The guideline has also been addressed in a number of publications. Check out the "KDIGO in the News" section of *KDIGO Direct* for links to recent articles.

## **KDIGO CONTROVERSIES CONFERENCES**



### **Scope of Work Public Review Period is Open for Genetics in CKD and Home Dialysis Controversies Conferences**

The Scope of Work for both the KDIGO Genetics in CKD Controversies Conference and the Home Dialysis Controversies Conference is open for public comment. KDIGO makes preliminary Scope of Work documents available for public review prior to final planning of any Controversies Conference.

The virtual **Genetics in CKD Controversies Conference**, scheduled for March 2021, will examine several issues related to monogenic and complex kidney diseases, applying genetic findings in clinical medicine, and using genomics for defining and stratifying CKD. Anna Köttgen, MD (Germany), and Ali Gharavi, MD (United States), will co-chair this conference.

Comments can be submitted on the Genetics in CKD Controversies Conference until **Monday, December 21**. The scope and feedback form can be found on the [Genetics in CKD Controversies Conference page on the KDIGO website](#).



The virtual **Home Dialysis Controversies Conference** will take place in May 2021. Participants will conduct a critical, in-depth review of factors that positively or negatively impact home dialysis utilization while considering criteria for candidacy, eligibility, and outcomes associated with home dialysis. The conference will explore factors impacting the patient and carer experience of home dialysis and the most

effective support mechanisms that enable its use. Jeff Perl, MD (Canada), and Martin Wilkie, MD (United Kingdom), will co-chair this conference.

Comments can be submitted on the Home Dialysis Controversies Conference until **Monday, January 4**. The scope and feedback form can be found on the [Home Dialysis Controversies Conference page](#) on the KDIGO website.

## WEBINARS & EVENTS

**SAVE THE DATE**  
**e-SPACE CRM**  
January 22-24, 2021  
THE FIRST GLOBAL WEB-CONFERENCE ON  
**THE CARDIO-RENAL-METABOLIC SYNDROME**  
Educational objectives:  
• Describe the complex pathophysiological interplay between cardiovascular disease, heart failure, diabetes and kidney disease.  
• Recognize the need for a multi-organ system approach in the management of patients with patients with cardiac, renal and metabolic comorbidities.  
• Analyze the results of recent landmark clinical trials and their implications in clinical practice.  
• Discuss novel pharmacological treatments and medical devices.  
• Implement treatment algorithms.  
10 Sessions  
20 live panel discussion  
40 talks by international experts  
FREE REGISTRATION

### Register for the e-SPACE CRM Cardiorenal Metabolic Syndrome Global Web Conference

Don't miss eSPACE CRM, the first global web conference on Cardiorenal Metabolic Syndrome from January 22-24, 2021.

The conference, organized by the Translational Medicine Academy with scientific input from KDIGO, will cover important topics such as arrhythmias in kidney disease and emerging treatment approaches for heart failure. [Learn more and register.](#)

**ISN** **KDIGO** **CKD EARLY IDENTIFICATION & INTERVENTION TOOLKIT**

### ISN & KDIGO Early Intervention in CKD Collaboration

The International Society of Nephrology (ISN) and KDIGO are working together to release a series of tools on early identification and intervention of CKD for nephrologists, primary care physicians, and allied health professionals. Stay tuned for speaker-guide, screening booklet, infographics, and more.

## KDIGO IN THE NEWS - ARTICLES FROM OTHER PUBLICATIONS



### FREELY FILTERED Episode 27: KDIGO Diabetes CPG

### NephJC: Diabetes Guideline on the Freely Filtered Podcast

The Filtrate welcome Drs. Katherine Tuttle and Ian de Boer to discuss the first KDIGO diabetic kidney disease guideline.

[Read more.](#)

**KDIGO executive summary**  
**KDIGO Controversies Conference on onco-nephrology: kidney disease in hematological malignancies and the burden of cancer after kidney transplantation**  
KDIGO executive summary  
The bidirectional relationship between cancer and chronic kidney disease (CKD) is complex. Research with patients and clinicians, including epidemiological, mechanistic, and clinical studies, has highlighted the need for a multi-organ system approach in the management of patients with cancer and kidney disease. This report covers the discussed controversies in kidney disease in hematological malignancies, as well as cancer after kidney transplantation, in terms of kidney research priorities to be discussed.

### Kidney International: KDIGO Onco-Nephrology Controversies Conference Report

The bidirectional relationship between cancer and chronic kidney disease (CKD) is complex. Patients with cancer, particularly those with hematological malignancies such as multiple myeloma and lymphoma, are at increased risk of developing acute kidney injury and CKD.

[Read more.](#)

### Annals of Internal Medicine: Synopsis of Diabetes Guideline

**Annals of Internal Medicine** **CLINICAL GUIDELINE**

**Diabetes Management in Chronic Kidney Disease: Synopsis of the 2020 KDIGO Clinical Practice Guideline**

**Authors:** Giovanni Sirtori, MD, PhD, Anna Maria Di Loro, MD, PhD, Giuseppe M. De Zeeuw, MD, PhD, et al.

**Background:** The 2020 KDIGO Clinical Practice Guideline for Diabetes Management in Chronic Kidney Disease (CKD) provides updated recommendations on the management of diabetes in patients with CKD. The guideline is based on a systematic review of the literature and includes recommendations on the use of insulin, oral hypoglycemic agents, and non-pharmacologic interventions.

**Key Recommendations:**

- Insulin:** For patients with CKD, insulin therapy should be initiated when the target glycemic level cannot be achieved with oral hypoglycemic agents. Insulin therapy should be initiated at a low dose and titrated to achieve the target glycemic level.
- Oral Hypoglycemic Agents:** For patients with CKD, oral hypoglycemic agents should be used with caution. Insulin is preferred over oral hypoglycemic agents in patients with CKD.
- Non-pharmacologic Interventions:** Non-pharmacologic interventions, such as diet and exercise, should be used to manage diabetes in patients with CKD.

**Conclusion:** The 2020 KDIGO Clinical Practice Guideline for Diabetes Management in Chronic Kidney Disease provides updated recommendations on the management of diabetes in patients with CKD. The guideline is based on a systematic review of the literature and includes recommendations on the use of insulin, oral hypoglycemic agents, and non-pharmacologic interventions.

This synopsis focuses on the key recommendations pertinent to the following issues: comprehensive care needs, glycemic monitoring and targets, lifestyle interventions, anti-hyperglycemic therapies, and educational and integrated care approaches.

[Read more](#)

## NEW CONTENT ON KDIGO YOUTUBE CHANNEL

Be sure to check out this month's new content on the KDIGO YouTube channel, including the ISN-KDIGO webinar on Early Identification and Intervention in Chronic Kidney Disease in November 2020.

Subscribe to the KDIGO YouTube channel and never miss another webinar or video: [KDIGO YouTube](#).



### About KDIGO

KDIGO is the global organization developing and implementing evidence-based clinical practice guidelines in kidney disease. It is an independent, volunteer-led, self-managed charity incorporated in Belgium accountable to the public and the patients it serves.

[Learn More](#)



KDIGO | Avenue Louise 65, Suite 11, Brussels, 1050 Belgium

[Unsubscribe {recipient's email}](#)

[Update Profile](#) | [About our service provider](#)

Sent by [kdigocommunications@kdigo.org](mailto:kdigocommunications@kdigo.org)