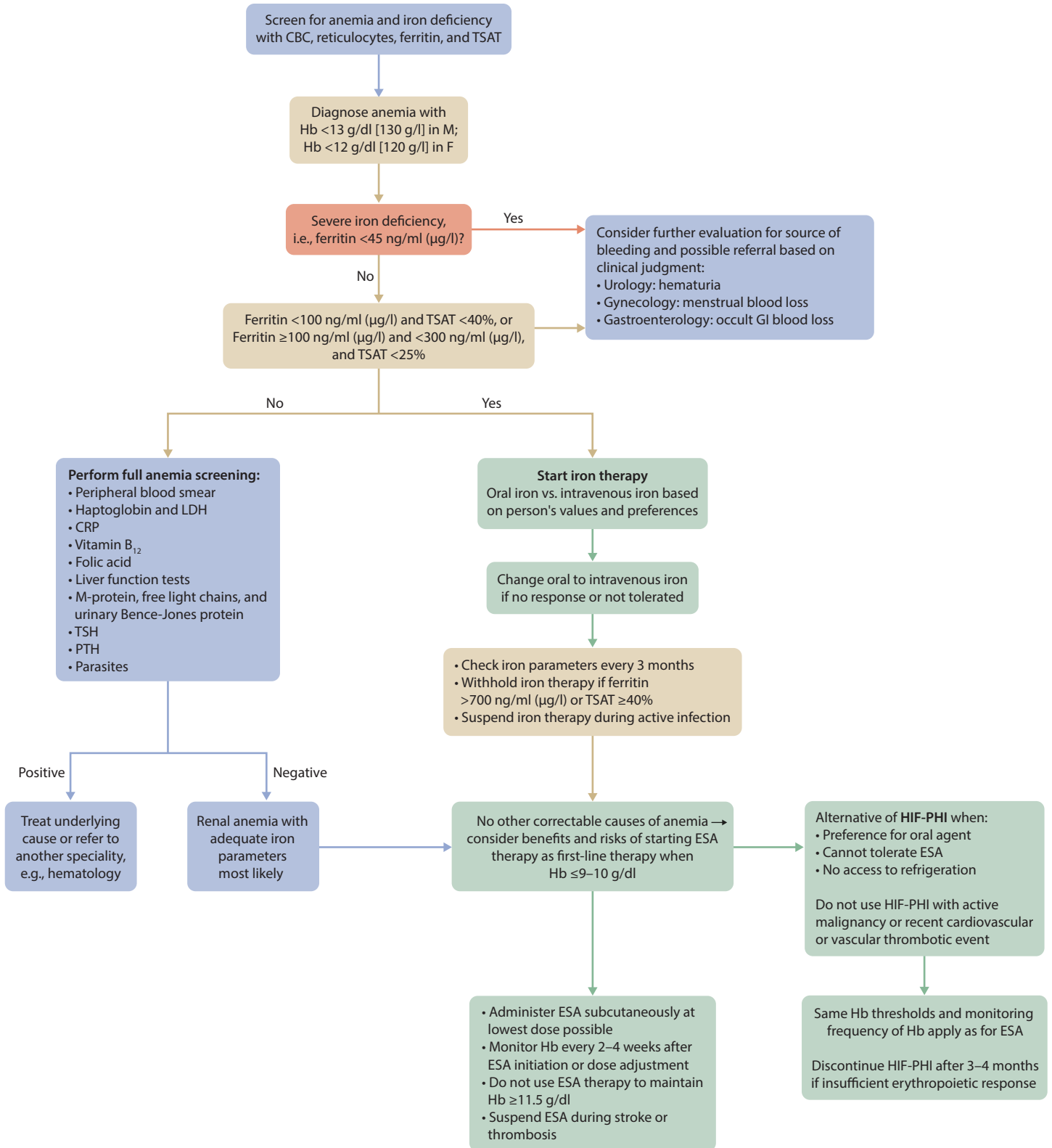


**KDIGO 2026 Clinical Practice Guideline for the Management of Anemia in CKD**  
**Central illustration of the management of anemia in chronic kidney disease G5 receiving peritoneal dialysis**



CBC, complete blood count; CRP, C-reactive protein; ESA, erythropoiesis-stimulating agent; F, female; GI, gastrointestinal; Hb, hemoglobin; HIF-PHI, hypoxia-inducible factor–prolyl hydroxylase inhibitor; LDH, lactate dehydrogenase; M, male; PTH, parathyroid hormone; TSAT, transferrin saturation; TSH, thyroid-stimulating hormone