

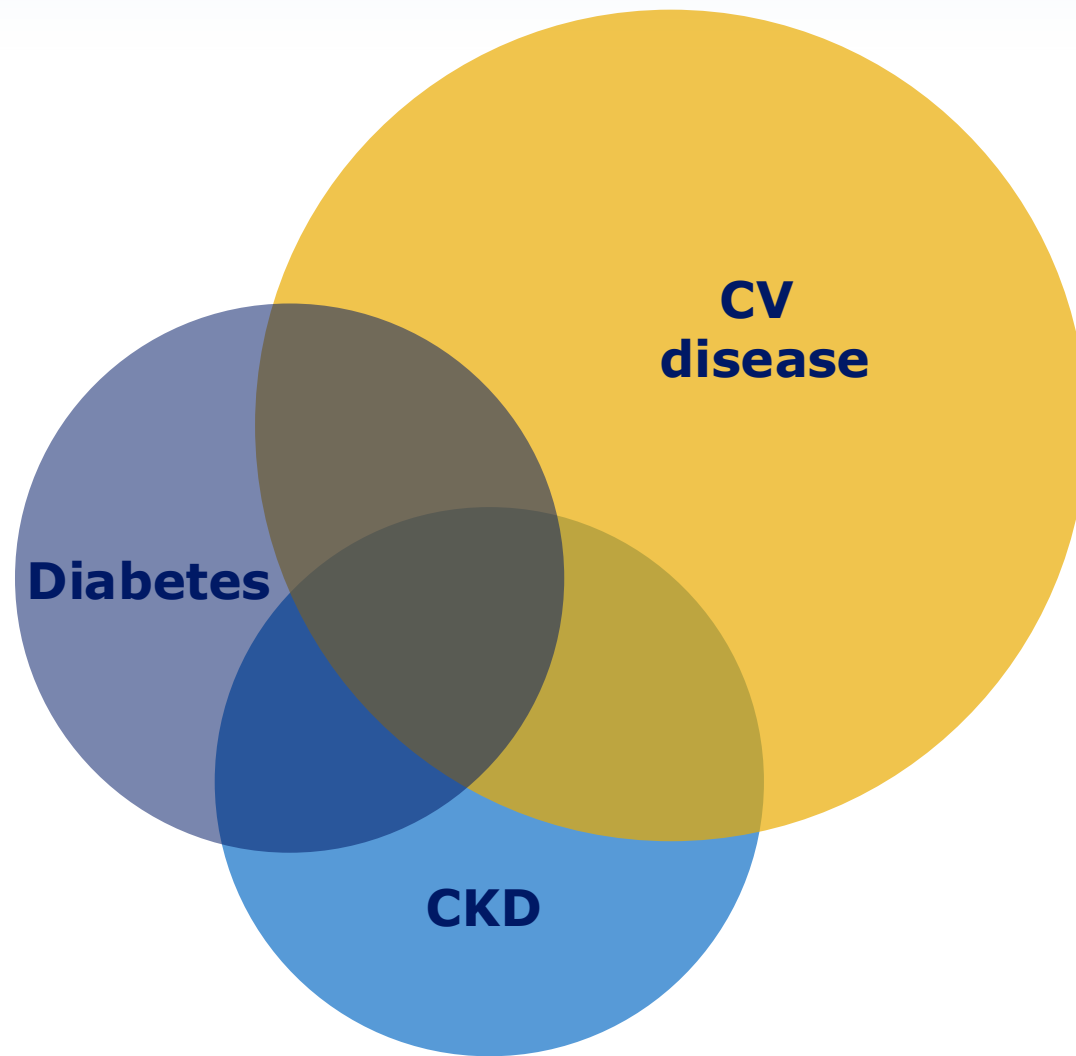


The Importance of Consensus: Bridging to Other Specialties and Guidelines

Prof Peter Rossing MD DMSc
Steno Diabetes Center Copenhagen
University of Copenhagen
Denmark

DISCLOSURES

- Professor Rossing has received the following:
 - Consultancy and/or speaking fees (to his institution) from Abbott, Amgen, AstraZeneca, Bayer, Boehringer Ingelheim, Eli Lilly, Gilead, Lexicon Pharma, Novo Nordisk, Roche, and Regeneron
 - Research grants from AstraZeneca Bayer Lexicon Pharma, and Novo Nordisk

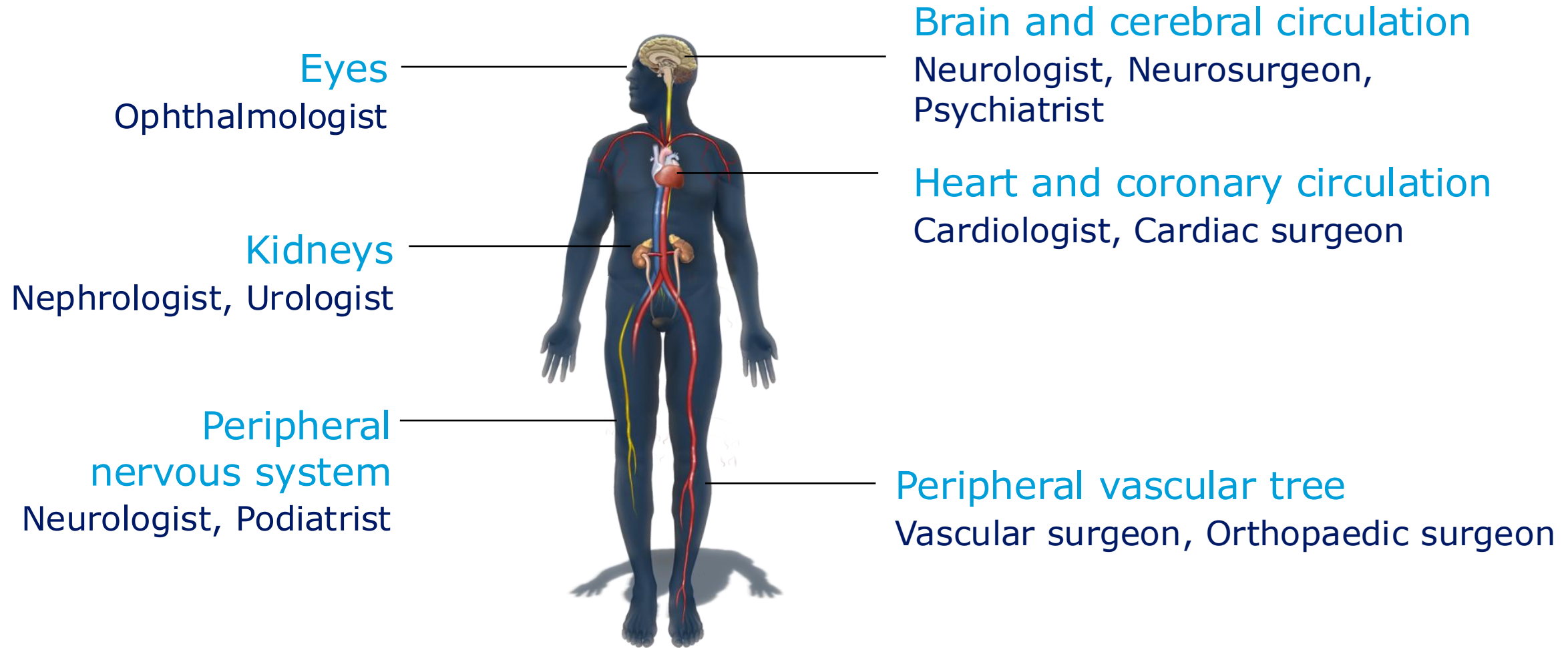


The majority of people with CKD are NOT seen by nephrologists

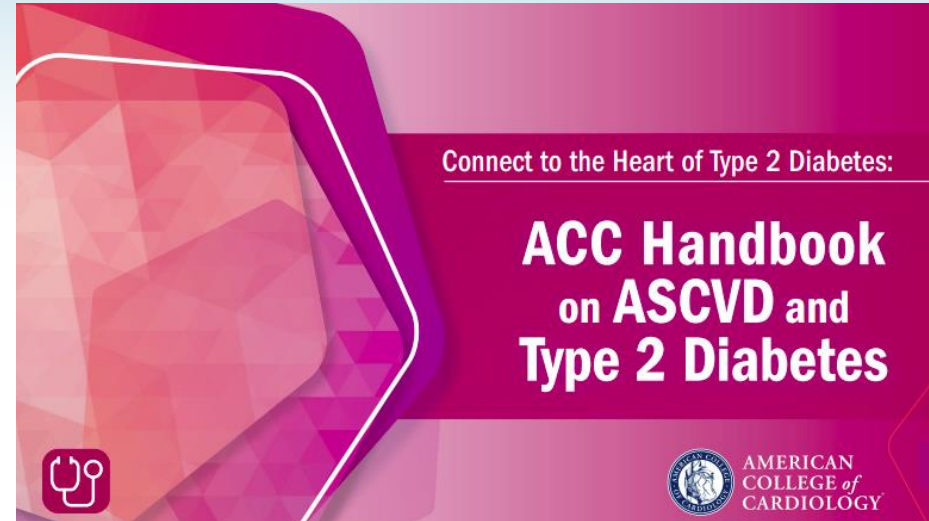
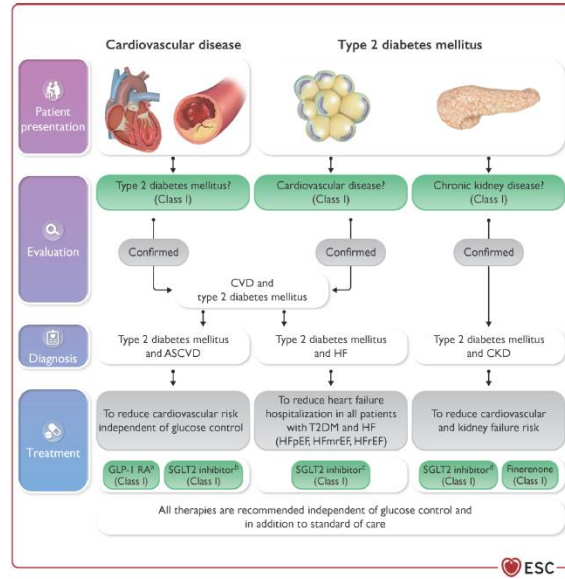
Table 1.1 Percentage and number of U.S. adults in KDIGO CKD risk categories

	Percentage	Number of Persons		
(a) Percentage by eGFR and ACR, 2017-March, 2020				
eGFR Categories	A1: Normal to mildly increased (ACR <30 mg/g)	A2: Moderately increased (ACR 30-299 mg/g)	A3: Severely increased (ACR ≥300 mg/g)	Total
G1: Normal or high (eGFR ≥90mL/min/1.73m ²)	59.8	5.0	0.68	65.5
G2: Mildly decreased (eGFR 60-89 mL/min/1.73m ²)	26.2	2.4	0.35	28.9
G3a: Mildly to moderately decreased (eGFR 45-59 mL/min/1.73m ²)	3.1	0.79	0.12	4.0
G3b: Moderately to severely decreased (eGFR 30-44 mL/min/1.73m ²)	0.61	0.32	0.18	1.1
G4: Severely decreased (eGFR 15-29 mL/min/1.73m ²)	0.07	0.08	0.18	0.34
G5: Kidney failure (eGFR <15 mL/min/1.73m ²)	0.00	0.02	0.13	0.15
Total	89.8	8.6	1.6	100

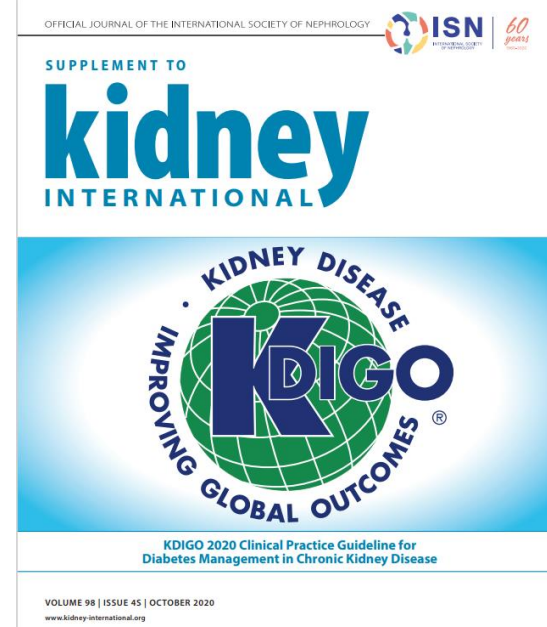
Multiple specialties are involved in treating complications of T2D



We all have our guideline



Clinical practice guidelines for management of hyperglycaemia in adults with diabetic kidney disease



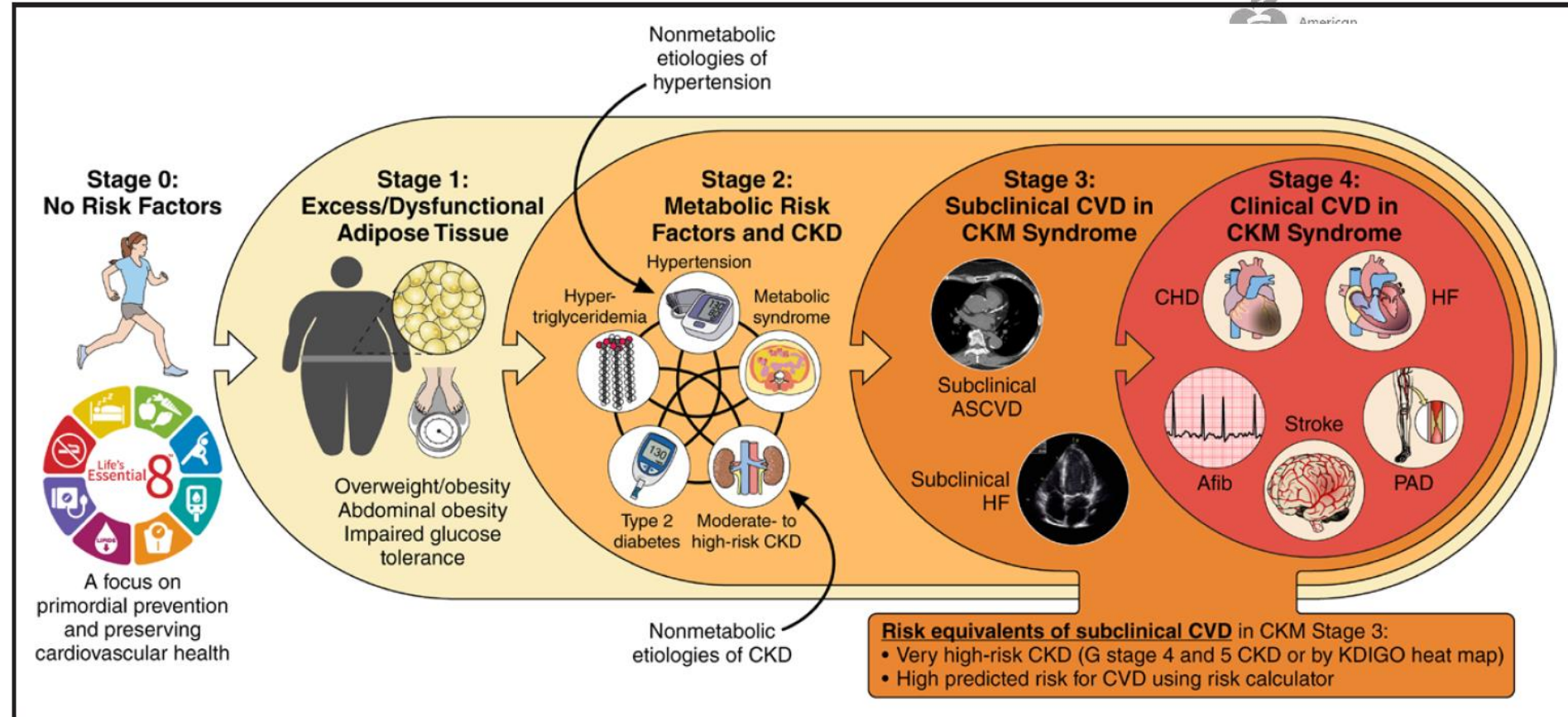
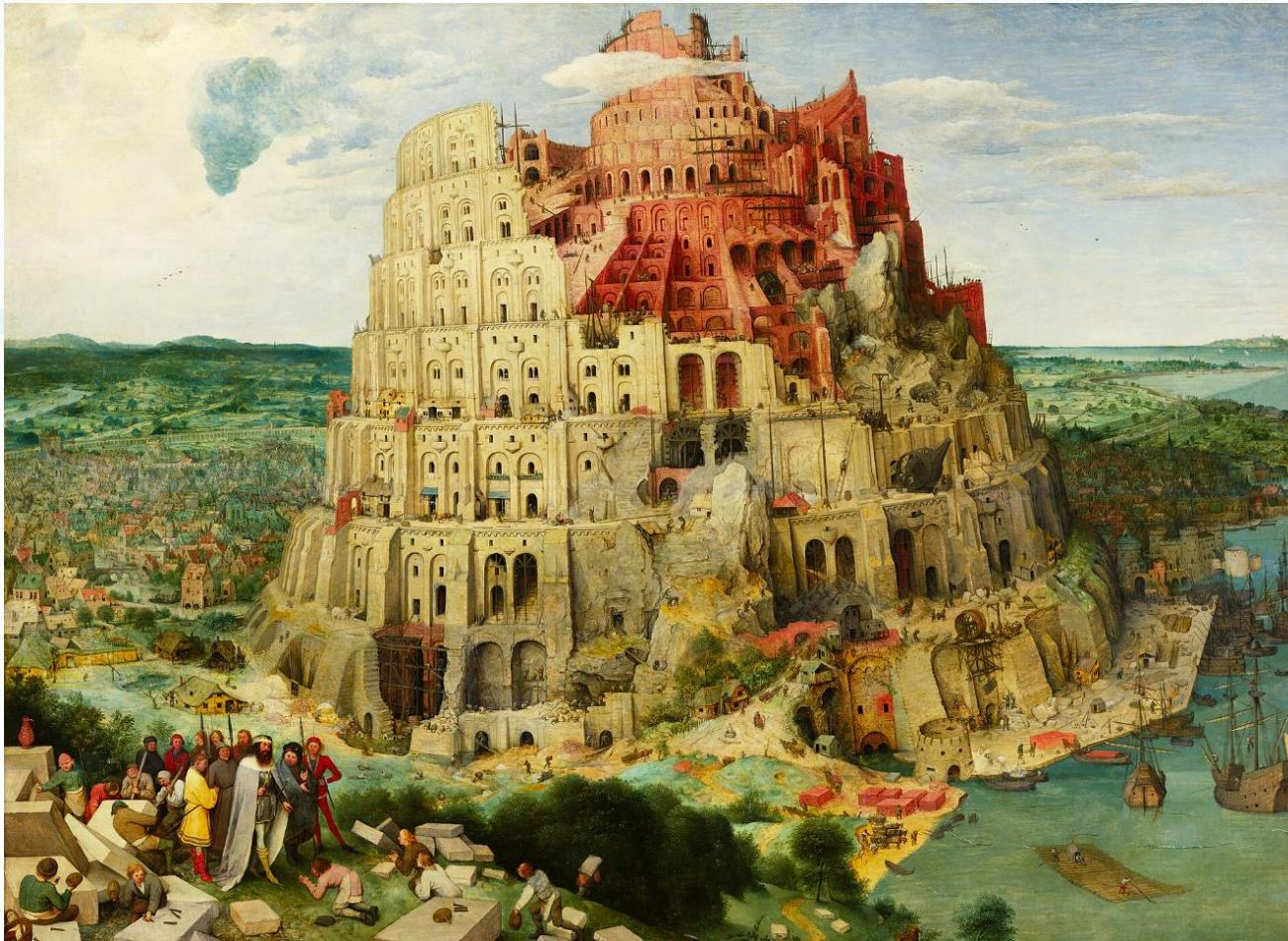
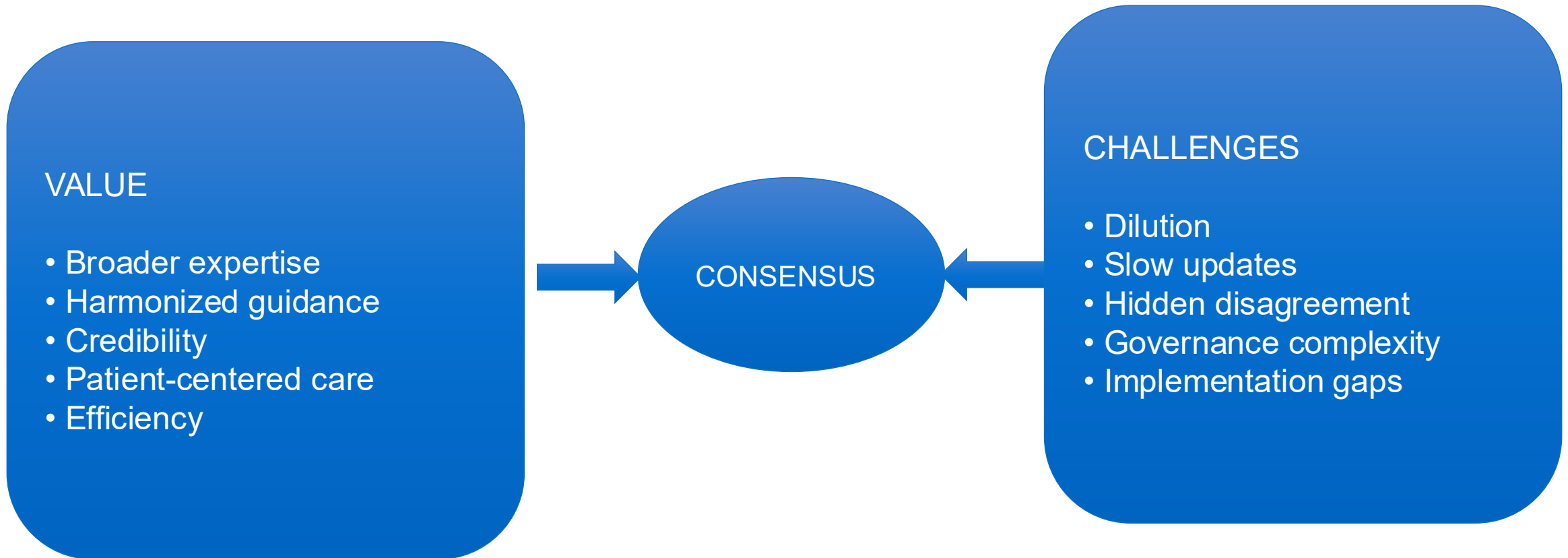


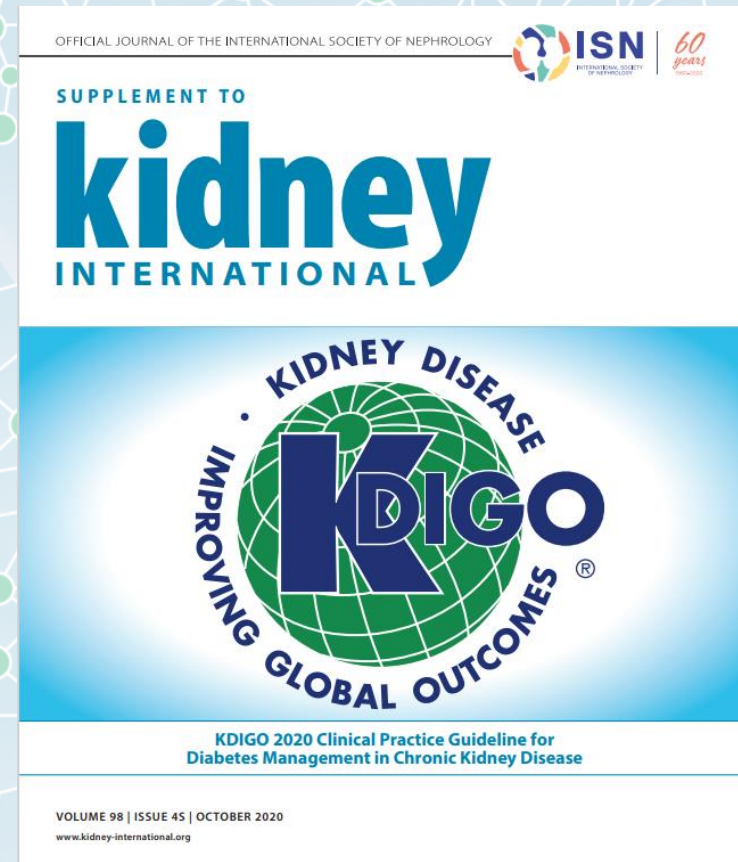
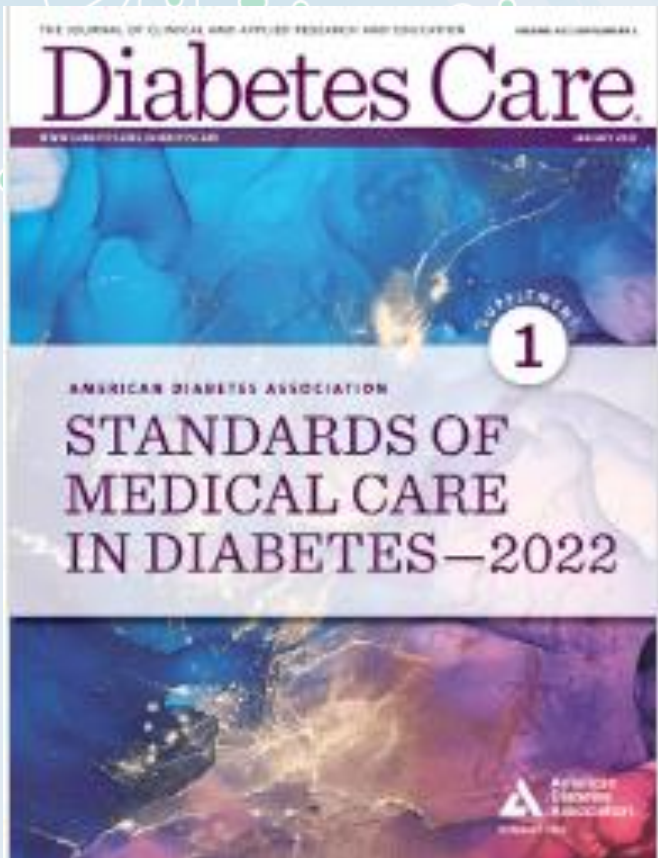
Figure 1. Stages of CKM syndrome.

If we do not create consensus and common guidance we will get nowhere



Value vs Challenges of Multi-Society Consensus Guidelines





?

COLLABORATION LEAD TO CONSENSUS REPORT

consensus report

www.kidney-international.org

Diabetes management in chronic kidney disease: a consensus report by the American Diabetes Association (ADA) and Kidney Disease: Improving Global Outcomes (KDIGO)



Ian H. de Boer¹, Kamlesh Khunti², Tami Sadusky³, Katherine R. Tuttle⁴, Joshua J. Neumiller⁵, Connie M. Rhee⁶, Sylvia E. Rosas⁷, Peter Rossing^{8,9} and George Bakris¹⁰



Diabetes Management in Chronic Kidney Disease: A Consensus Report by the American Diabetes Association (ADA) and Kidney Disease: Improving Global Outcomes (KDIGO)

<https://doi.org/10.2337/dci22-0027>

Ian H. de Boer,¹ Kamlesh Khunti,² Tami Sadusky,³ Katherine R. Tuttle,⁴ Joshua J. Neumiller,⁵ Connie M. Rhee,⁶ Sylvia E. Rosas,⁷ Peter Rossing,^{8,9} and George Bakris¹⁰

¹Kidney Research Institute, University of Washington, Seattle, WA

²Diabetes Research Centre, University of Leicester, Leicester, UK



RECENT HYPERTENSION GUIDELINES

445.e1

The American Journal of Medicine, Vol 136, No 5, May 2023

Appendix Table Published Practice Guidelines and Positions Statements on Blood Pressure Measurement		
Organization	Most recent guideline	URL
ACC/AHA	ACC/AHA/AAPA/ABC/ACPM/AGS/APhA/ASH/ASPC/NMA/PCNA Guideline for the Prevention, Detection, Evaluation, and Management of High Blood Pressure in Adults: Executive Summary: A Report of the American College of Cardiology/American Heart Association Task Force on Clinical Practice Guidelines	https://www.ahajournals.org/doi/full/10.1161/HYP.000000000000066?rfr_dat=cr_pub+0pubmed&url_ver=Z39.88-2003&rfr_id=ori%3Arid%3Aacrossref.org
AHA	Measurement of Blood Pressure in Humans A Scientific Statement from the American Heart Association	https://www.ahajournals.org/doi/full/10.1161/HYP.000000000000087?rfr_dat=cr_pub+0pubmed&url_ver=Z39.88-2003&rfr_id=ori%3Arid%3Aacrossref.org
ESC/ESH	2018 ESC/ESH Guidelines for the management of arterial hypertension The Task Force for the management of arterial hypertension of the European Society of Cardiology and the European Society of Hypertension	https://journals.lww.com/jhypertension/Fulltext/2018/10000/2018_ESC_ESH_Guidelines_for_the_management_of.2.aspx
ESH	2021 European Society of Hypertension practice guidelines for office and out-of-office blood pressure measurement	https://journals.lww.com/jhypertension/Fulltext/2021/07000/2021_European_Society_of_Hypertension_practice.5.aspx
Hypertension Canada	Hypertension Canada's 2020 Comprehensive Guidelines for the Prevention, Diagnosis, Risk Assessment, and Treatment of Hypertension in Adults and Children	https://www.onlinecjc.ca/action/showPdf?pii=S0828-282X%2820%2930191-4
ISH	2020 International Society of Hypertension Global Hypertension Practice Guidelines	https://www.ahajournals.org/doi/epdf/10.1161/HYPERTENSIONAHA.120.15026
KDIGO	KDIGO 2021 Clinical Practice Guideline for the Management of Blood Pressure in Chronic Kidney Disease	https://kdigo.org/wp-content/uploads/2016/10/KDIGO-2021-BP-GL.pdf
Lancet Commission for Hypertension	Optimizing observer performance of clinic blood pressure measurement A position statement from the Lancet Commission on Hypertension Group	https://journals.lww.com/jhypertension/Fulltext/2019/09000/Optimizing_observer_performance_of_clinic_blood.2.aspx
Lancet Commission for Hypertension	Lancet Commission on Hypertension group position statement on the global improvement of accuracy standards for devices that measure blood pressure	https://journals.lww.com/jhypertension/pages/articleviewer.aspx?year=2020&issue=01000&article=00004&type=Fulltext
National Heart Foundation Australia	Guideline for the diagnosis and management of hypertension in adults (2016)	https://www.heartfoundation.org.au/getmedia/c83511ab-835a-4fcf-96f5-88d770582ddc/PRO-167_Hypertension-guideline-2016_WEB.pdf
National Heart, Lung, and Blood	Blood Pressure Assessment in Adults in Clinical Practice and Clinic-Based Research JACC Scientific Expert Panel	https://www.sciencedirect.com/sdfe/reader/pii/S0735109718392738/pdf
NICE	Hypertension in adults: diagnosis and management	https://www.nice.org.uk/guidance/ng136/resources/hypertension-in-adults-diagnosis-and-management-pdf-66141722710213
PAHO	HEARTS in the Americas: Guide and Essentials for Implementation	https://iris.paho.org/bitstream/handle/10665.2/55804/9789275125281_eng.pdf?sequence=1&isAllowed=y
WHO	WHO technical specifications for automated non-invasive blood pressure measuring devices with cuff	https://apps.who.int/iris/handle/10665/331749

AAPA = American Academy of Physician Assistants; ABC = Association of Black Cardiologists; ACC = American College of Cardiology; ACPM = American College of Preventive Medicine; AGS = American Geriatrics Society; AHA = American Heart Association; APhA = American Pharmacists Association; ASH = American Society of Hypertension; ASPC = American Society for Preventive Cardiology; ESH = European Society of Hypertension; ESC = European Society of Cardiology; ISH = International Society of Hypertension; KDIGO = Kidney Disease: Improving Global Outcomes; NICE = National Institute for Health and Care Excellence; NMA = National Medical Association; PAHO = Pan American Health Organization; PCNA = Preventive Cardiovascular Nurses Association; WHO = World Health Organization.





International Consensus on Standardized Clinic Blood Pressure Measurement – A Call to Action

Alfred K. Cheung, MD,^a Paul K. Whelton, MD, MSc,^b Paul Muntner, PhD, MHS, FASH, FAHA,^c
 Aletta E. Schutte, PhD, FESC, FRRSAFISHF,^{d,e} Andrew E. Moran, MD, MPH,^f Bryan Williams, MD, FRCP, FMedSci,^g
 Pantelis Sarafidis, MD, MSc, PhD,^h Tara I. Chang, MD, MS,ⁱ Stella S. Daskalopoulou, MD, MSc, DIC, PhD,^{j,k}
 John M. Flack, MD, MPH,^l Garry Jennings, MD,^m Stephen P. Juraschek, MD, PhD,ⁿ Reinhold Kreutz, MD, PhD,^o
 Giuseppe Mancia, MD, PhD,^p Shawna Nesbitt, MD, MS,^q Pedro Ordunez, MD, PhD,^r Raj Padwal, MD, FRCSC,^s
 Alexandre Persu, MD, PhD, FESC,^t Doreen Rabi, MD, MSc, FRCPC,^{u,v} Markus P. Schlaich, MD, FAHA, FESC, ISHF,^w
 George S. Stergiou, MD, PhD, FRCP,^x Sheldon W. Tobe, MD, FRCPC, FRCP, FACP, FAHA, MScCH (HPTE),^{y,z}
 Maciej Tomaszewski, MD, FRCP, FAHA,^{aa,bb} Kim A. Williams Sr, MD, MACC, MASNC, FAHA, FESC,^{cc}
 Johannes F.E. Mann, MD^{dd,ee}

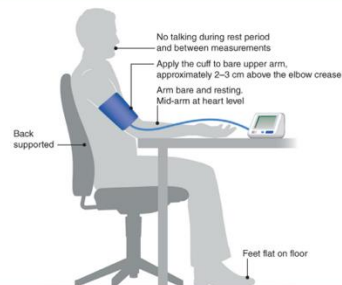
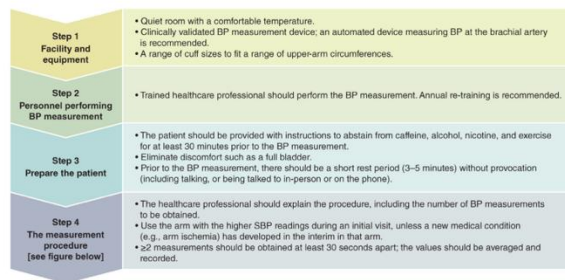


Figure Steps for implementing standardized clinic BP measurement. BP = blood pressure; SBP = systolic blood pressure.

13 societies and organisations together

SOLUTIONS TO OVERCOME BARRIERS AND SUCCESS STORIES

Be Pragmatic, Not Dogmatic



• Danish example of failure

- Guideline for management of CKD, nephrology, endocrinology, clinical biochemistry, general practice/family physicians tried to reach agreement on CKD management

Sodium-glucose cotransporter 2 (SGLT2) inhibitor:

Treatment with SGLT2 inhibitors is recommended for patients with eGFR >20 ml/min/1.73 m² and U-albumin/creatinine ratio >200 mg/g

Treatment with SGLT2 inhibitors can also be considered for patients with eGFR 20-45 ml/min/1.73 m² regardless of U-albumin/creatinine ratio

A greater effect on preserving GFR has been shown with increasing albuminuria.

PRIMARY PREVENTION OF CHRONIC KIDNEY DISEASE IN DIABETES – A SYSTEMATIC REVIEW AND CONSENSUS REPORT

- A consensus for the ACC/ADA/EASD/KDIGO

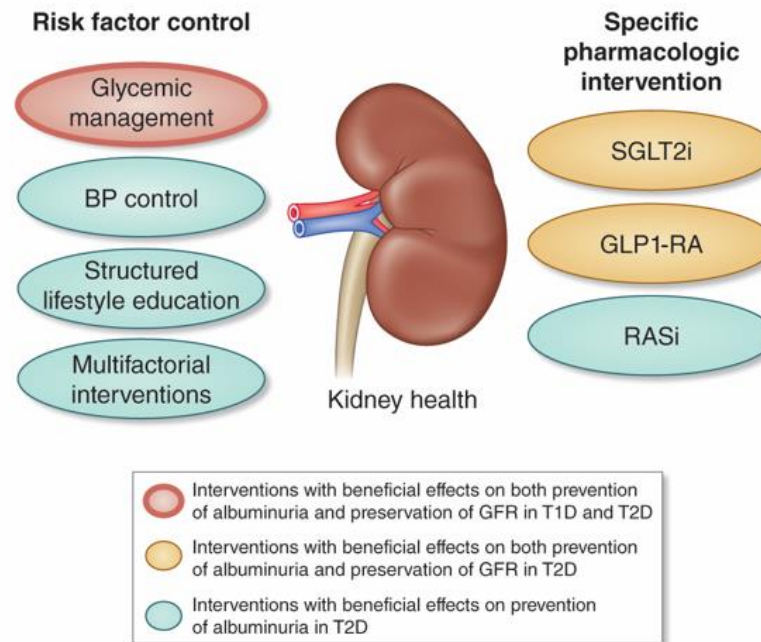
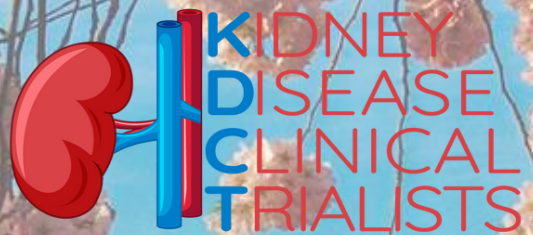


Figure 2. Evidence-based interventions to prevent CKD and preserve kidney health among people with diabetes.

Creating consensus across specialties
hopefully provide clearer messages,
less confusion, and more impact

APRIL 10-11, 2026 • FRENCH EMBASSY, WASHINGTON D.C.



Thank you